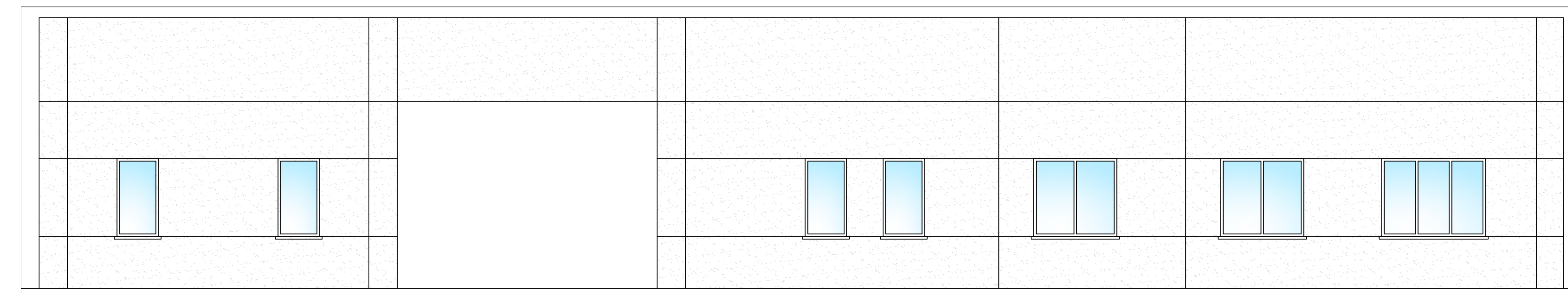


| Nome | Area |
|----------------|-----------------------------|
| Antibagno | 7,85 m ² |
| Antibagno | 7,85 m ² |
| Area Break | 69,00 m ² |
| Dispagnino | 13,45 m ² |
| Dispagnino | 16,38 m ² |
| Docce | 11,15 m ² |
| Docce | 11,15 m ² |
| Ingresso | 6,26 m ² |
| Ingresso | 6,26 m ² |
| Locale Autisti | 23,50 m ² |
| Locale Autisti | 18,40 m ² |
| Locale Autisti | 18,40 m ² |
| Locale Autisti | 23,50 m ² |
| Locale Autisti | 18,30 m ² |
| Locale Autisti | 18,30 m ² |
| Rip. | 6,50 m ² |
| Tettoia | 69,00 m ² |
| WC | 2,85 m ² |
| WC | 3,10 m ² |
| WC | 3,10 m ² |
| WC | 3,10 m ² |
| WC | 2,85 m ² |
| WC | 2,85 m ² |
| TOTALE | 356,45 m² |

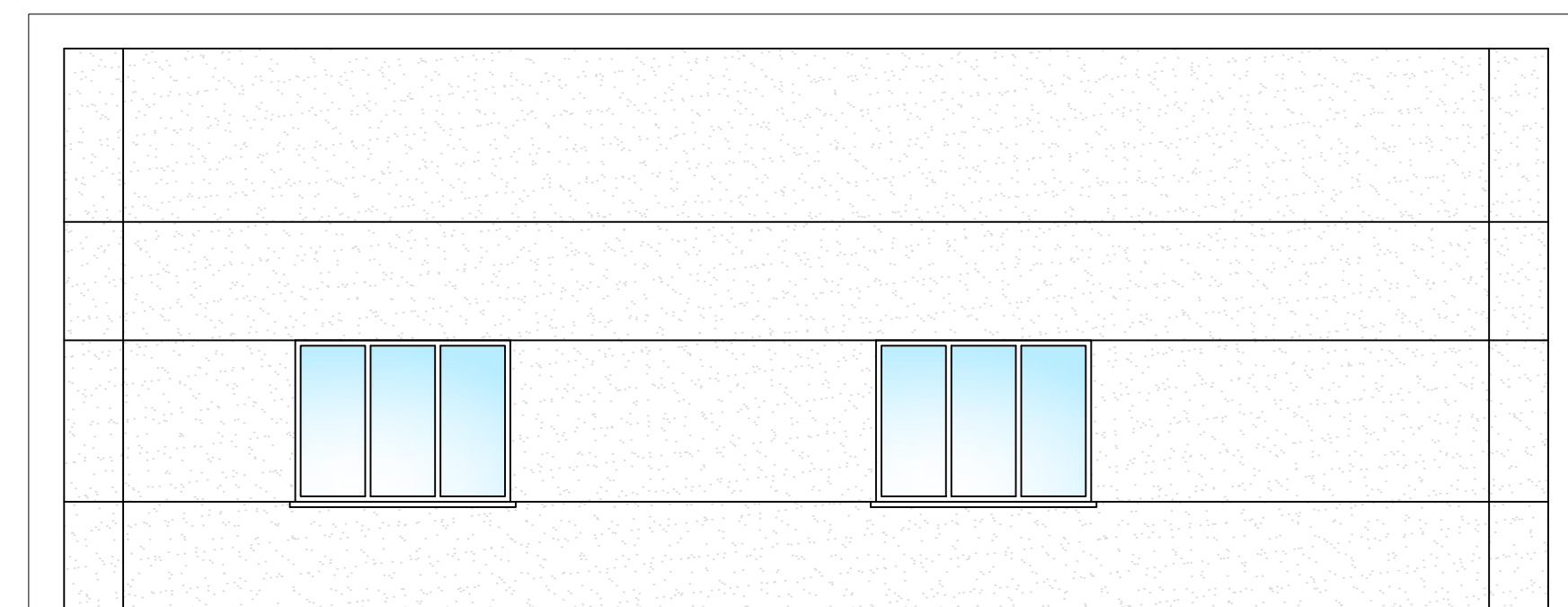
| RAPPORTI ILLUMINANTI LOCALE AUTISTI | | | | | | |
|-------------------------------------|-----------|-----------|---------|----------------------|---------------------|-------|
| N° finestre | Tipologia | Larghezza | Altezza | Sup. Illuminante | RI | |
| Antibagno | 2 | 80x150 | 0,80 | 1,50 | 2,40 m ² | 0,306 |
| Antibagno | 2 | | | 2,40 m ² | 0,306 | |
| Area Break | 3 | 200x150 | 2,00 | 1,50 | 9,00 m ² | 0,131 |
| Area Break | 3 | | | 9,00 m ² | 0,131 | |
| Docce | 2 | 80x150 | 0,80 | 1,50 | 2,40 m ² | 0,215 |
| Docce | 2 | | | 2,40 m ² | 0,215 | |
| Ingresso | 1 | 80x150 | 0,80 | 1,50 | 1,20 m ² | 0,192 |
| Ingresso | 1 | | | 1,20 m ² | 0,192 | |
| Locale Autisti | 6 | | 1,50 | 15,60 m ² | 0,779 | |
| Locale Autisti | 6 | | | 15,60 m ² | 0,779 | |
| Rip. | 1 | 80x150 | 0,80 | 1,50 | 1,20 m ² | 0,184 |
| Rip. | 1 | | | 1,20 m ² | 0,184 | |

| RAPPORTI AREANTI LOCALE AUTISTI | | | | | | |
|---------------------------------|-------------|-----------|-----------|---------|----------------------|-------|
| Locale | N° finestre | Tipologia | Larghezza | Altezza | Sup. Areante | RA |
| Antibagno | 2 | 80x150 | 0,8 | 1,50 | 2,40 m ² | 0,306 |
| Antibagno | 2 | | | | 2,40 m ² | 0,306 |
| Area Break | 3 | 200x150 | 2,0 | 1,50 | 9,00 m ² | 0,131 |
| Area Break | 3 | | | | 9,00 m ² | 0,131 |
| Docce | 2 | 80x150 | 0,8 | 1,50 | 2,40 m ² | 0,215 |
| Docce | 2 | | | | 2,40 m ² | 0,215 |
| Ingresso | 1 | 80x150 | 0,8 | 1,50 | 1,20 m ² | 0,192 |
| Ingresso | 1 | | | | 1,20 m ² | 0,192 |
| Locale Autisti | 4 | 160x150 | 1,6 | 1,50 | 9,60 m ² | 0,523 |
| Locale Autisti | 2 | 200x150 | 2,0 | 1,50 | 6,00 m ² | 0,255 |
| Locale Autisti | 6 | | | | 15,60 m ² | 0,779 |
| Rip. | 1 | 80x150 | 0,8 | 1,50 | 1,20 m ² | 0,184 |
| Rip. | 1 | | | | 1,20 m ² | 0,184 |

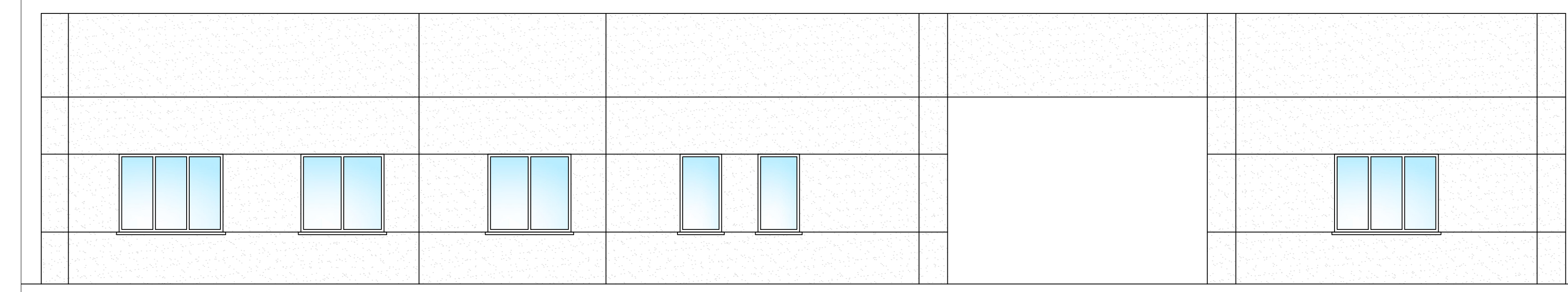
LOCALE AUTISTI SCALA 1:100



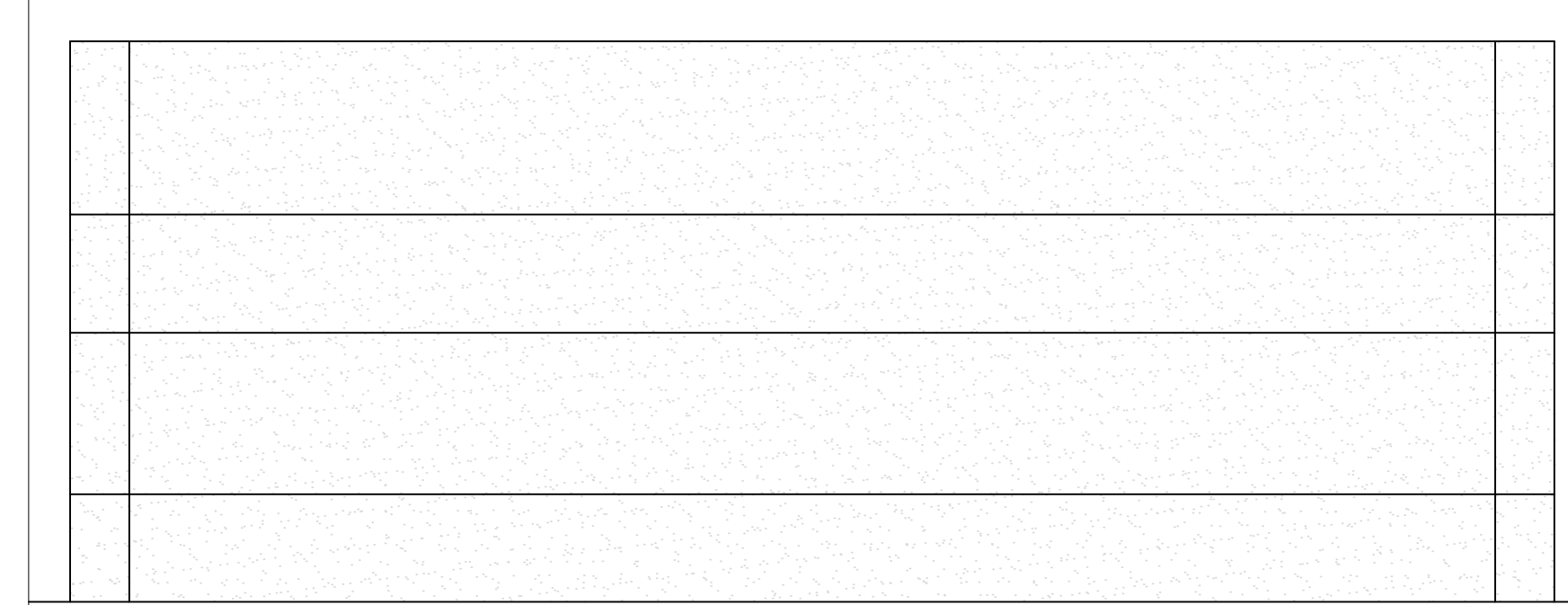
PROSPETTO B



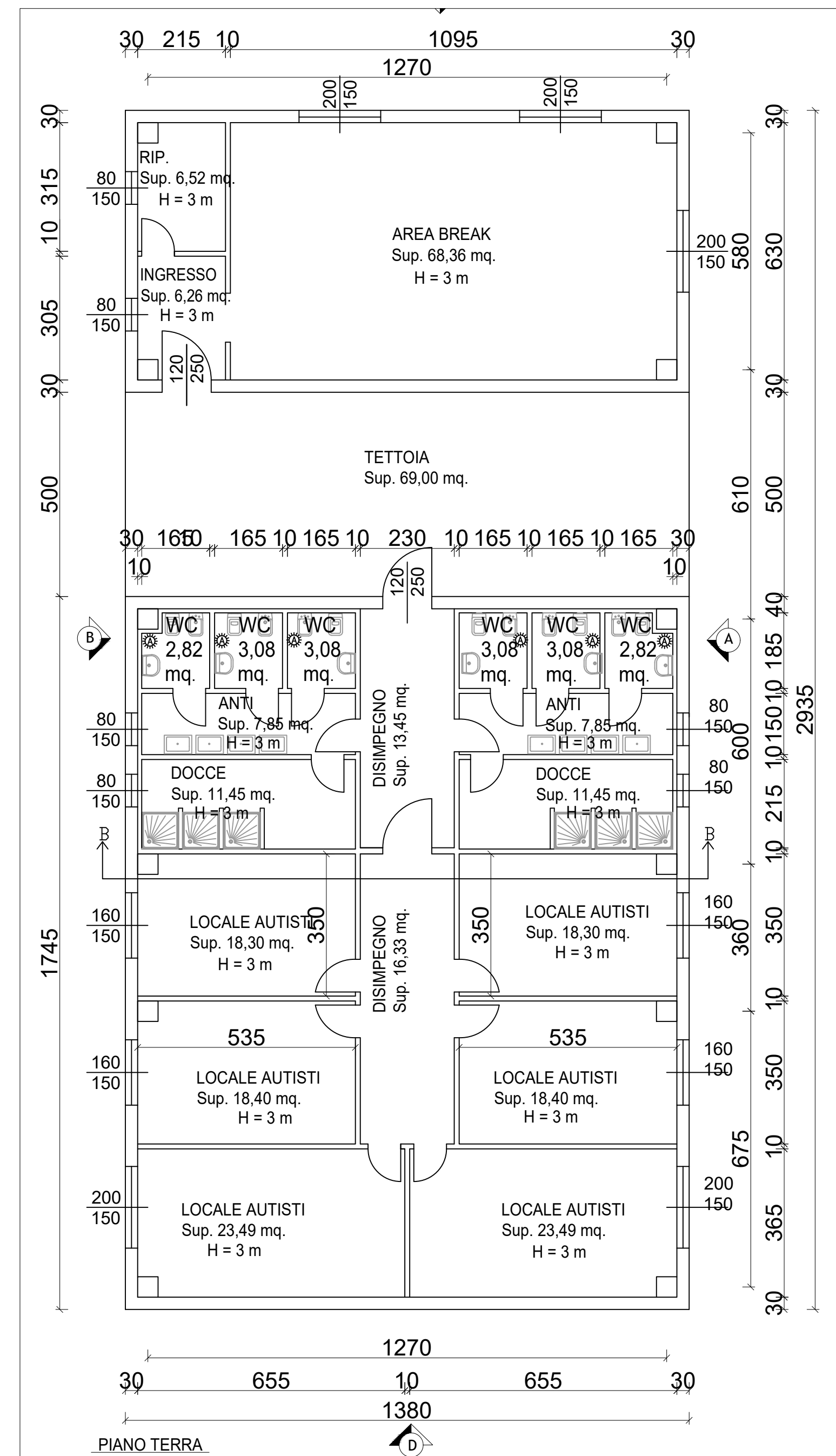
PROSPETTO C



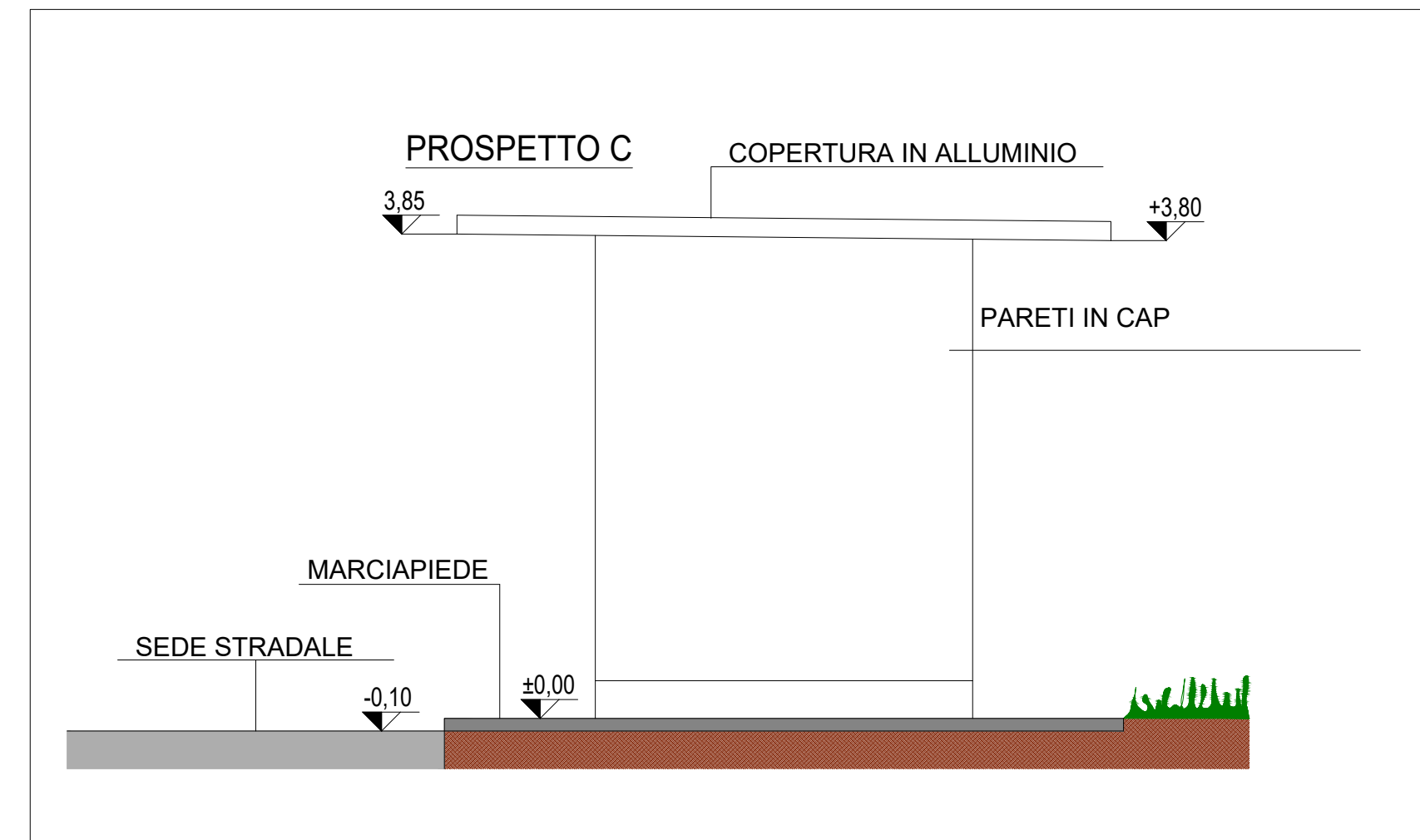
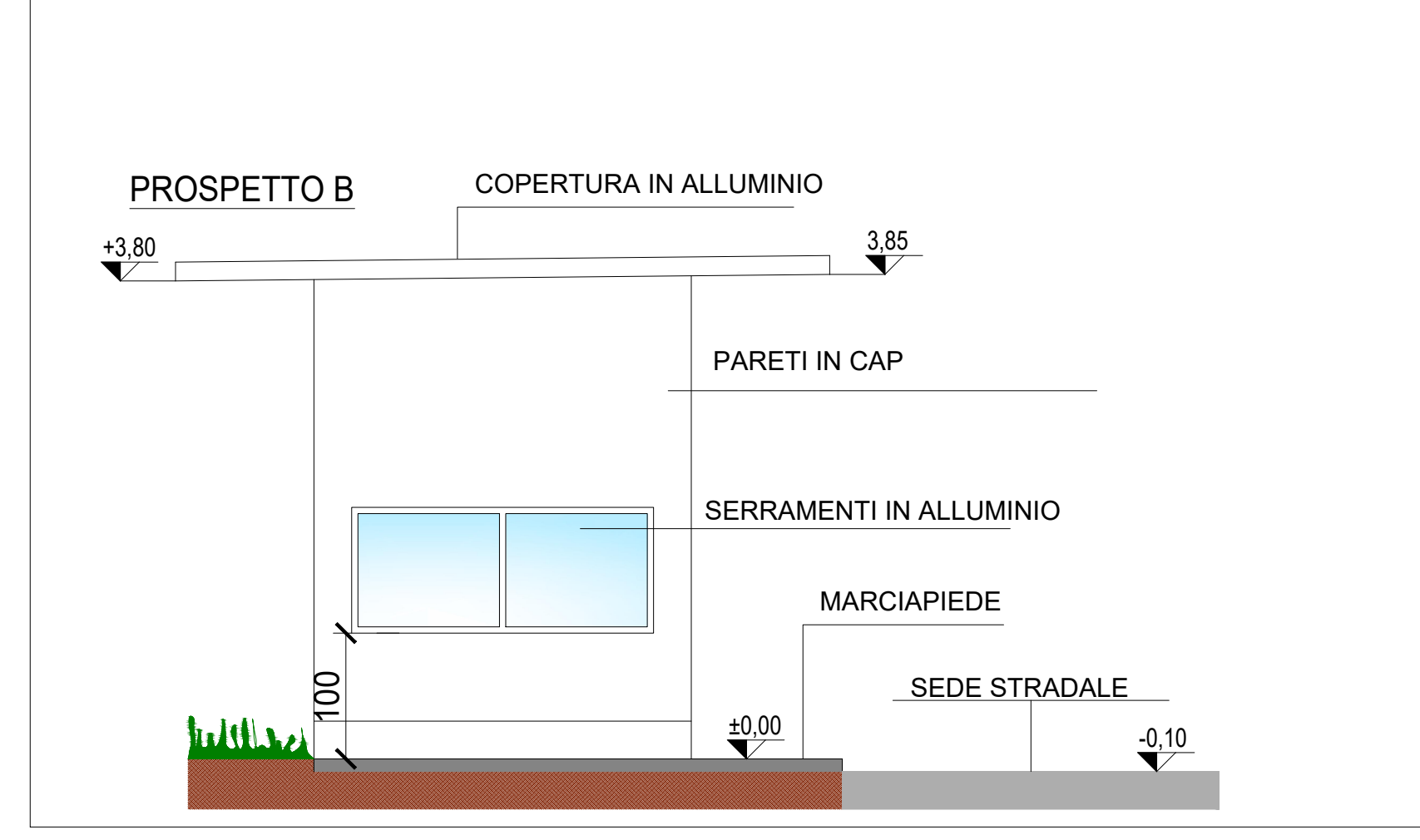
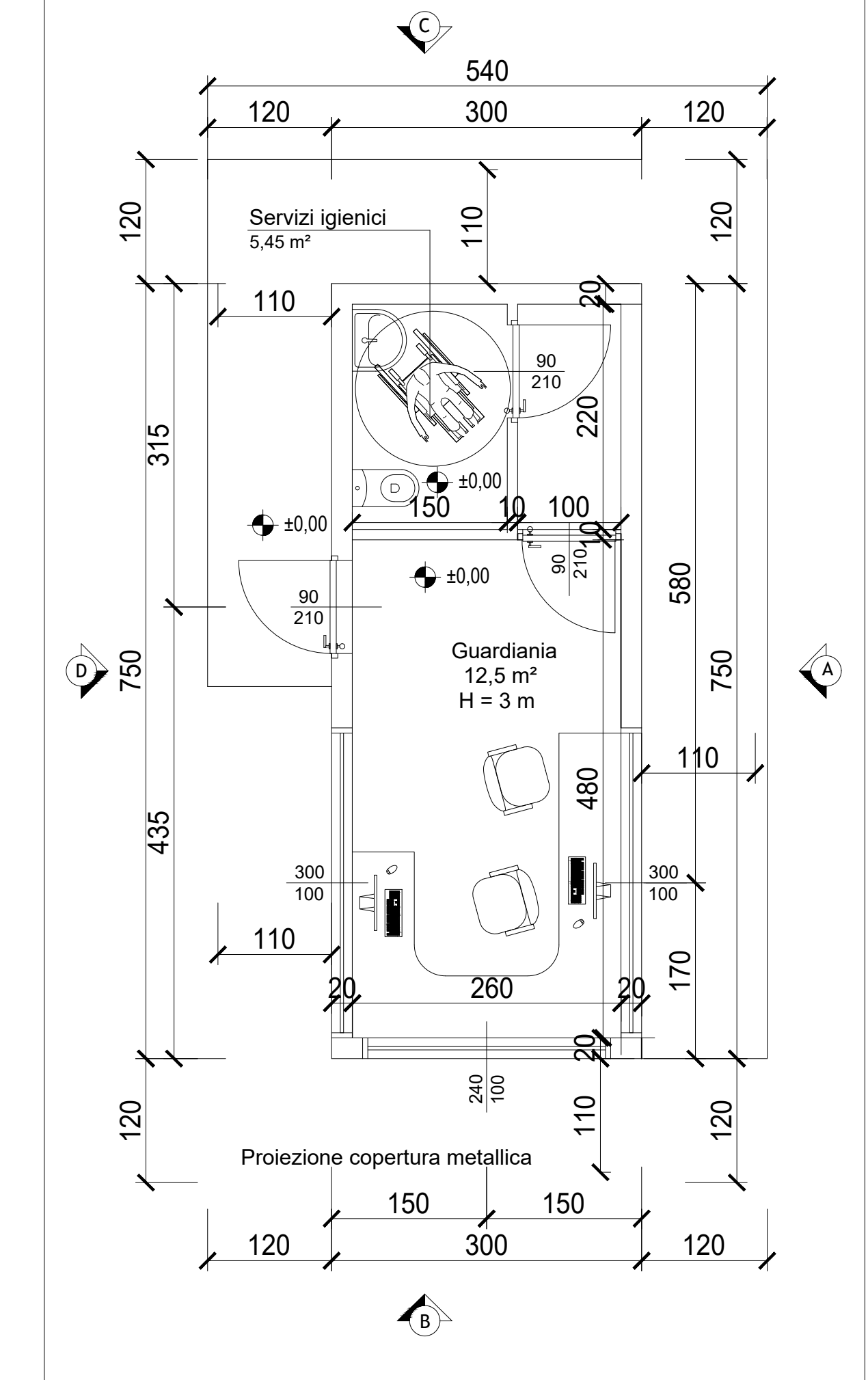
PROSPETTO A



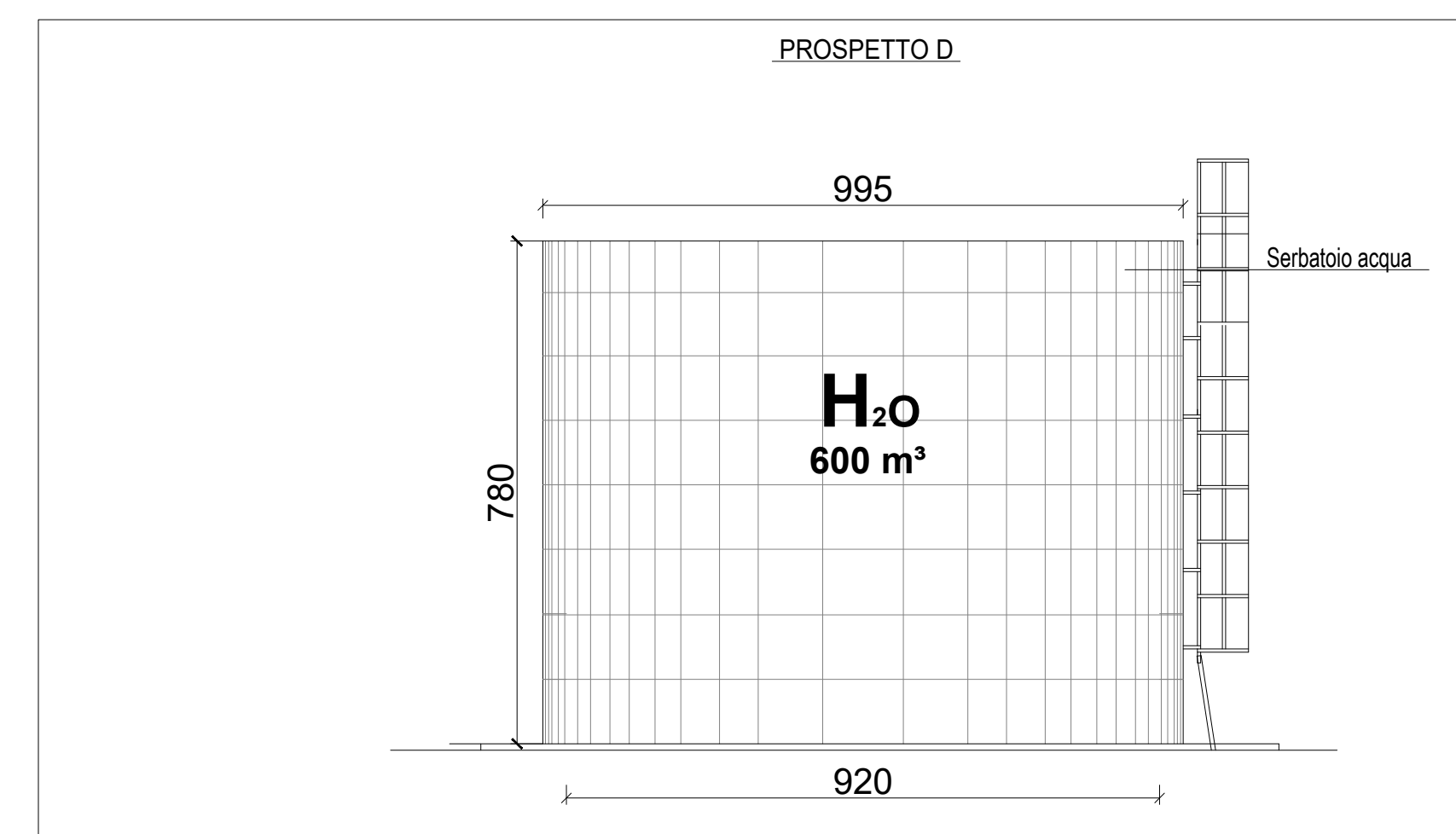
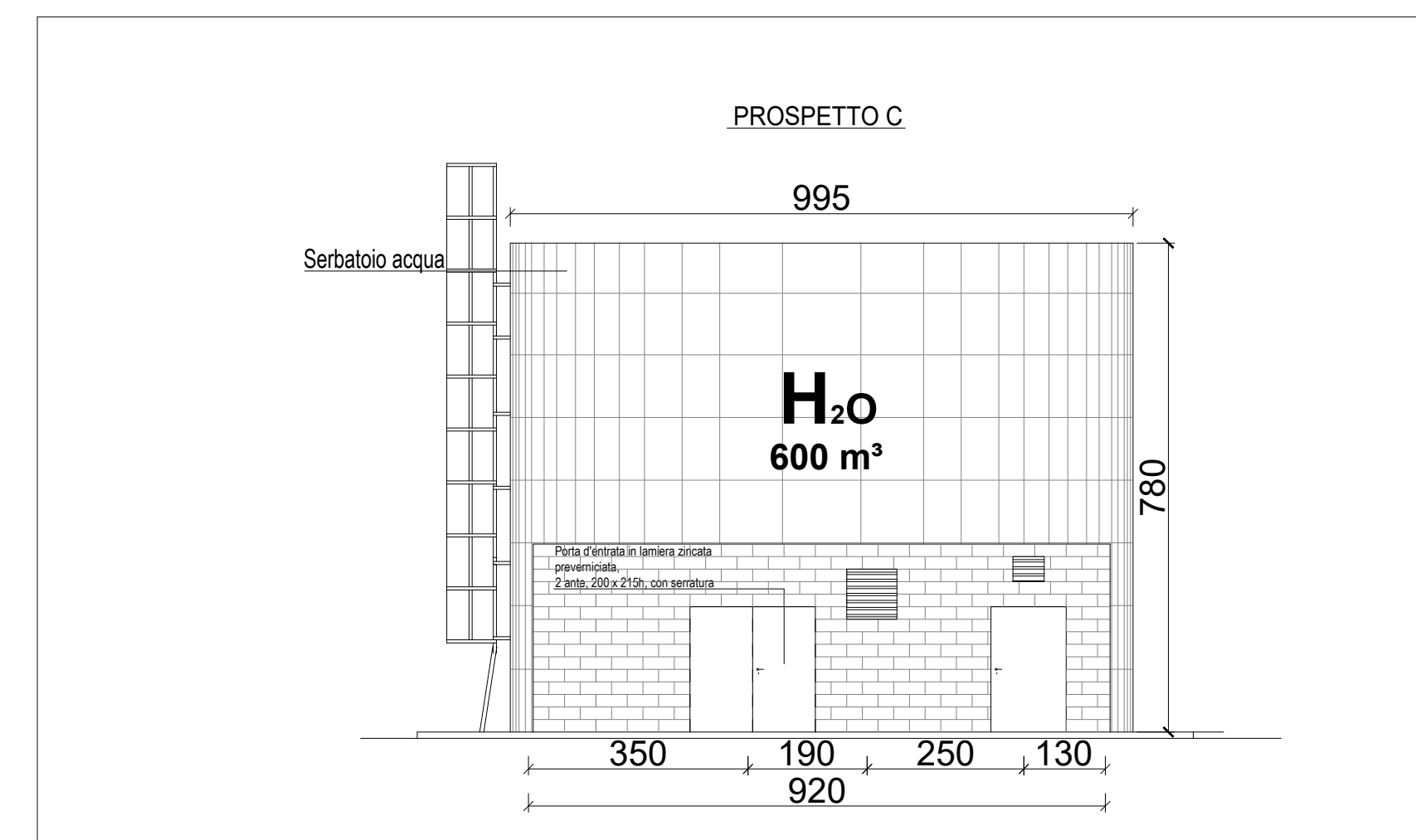
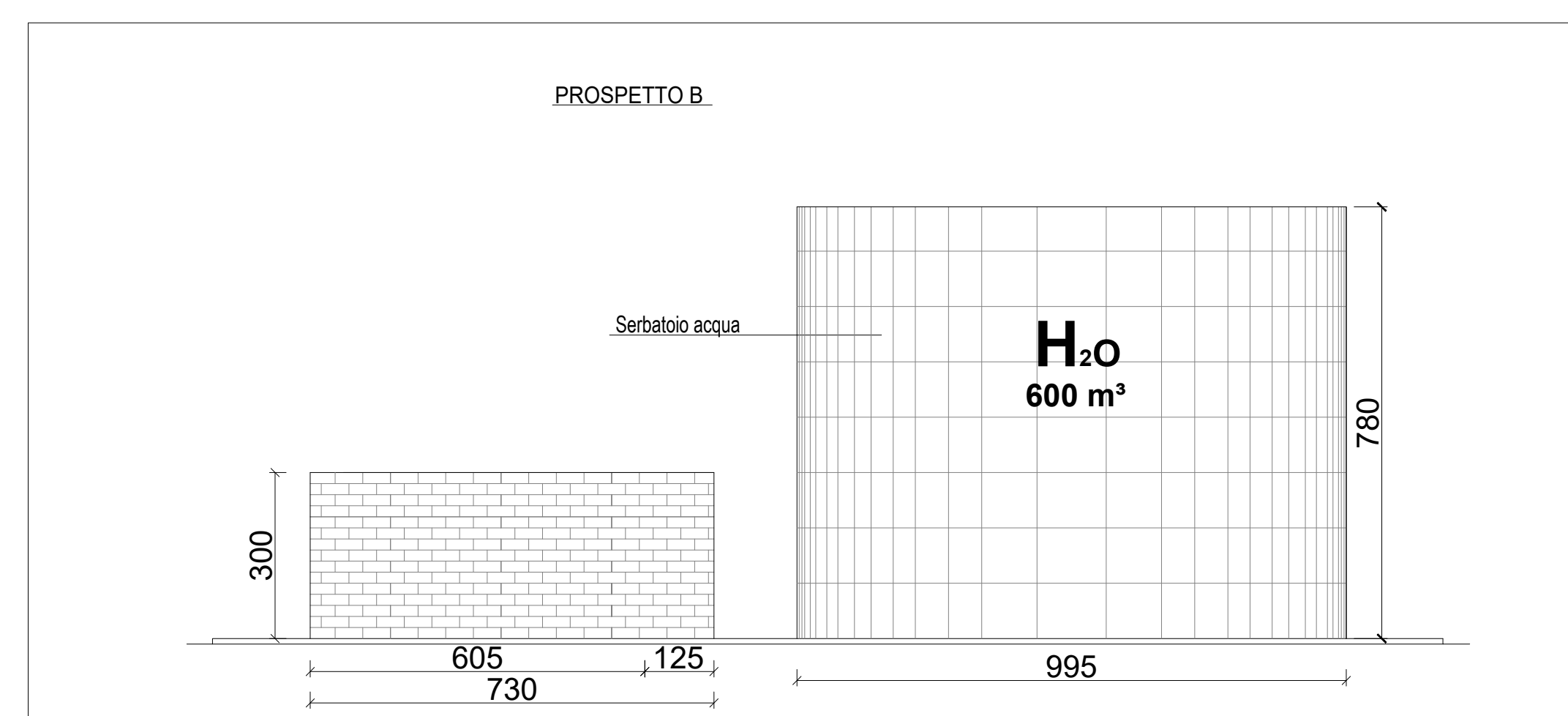
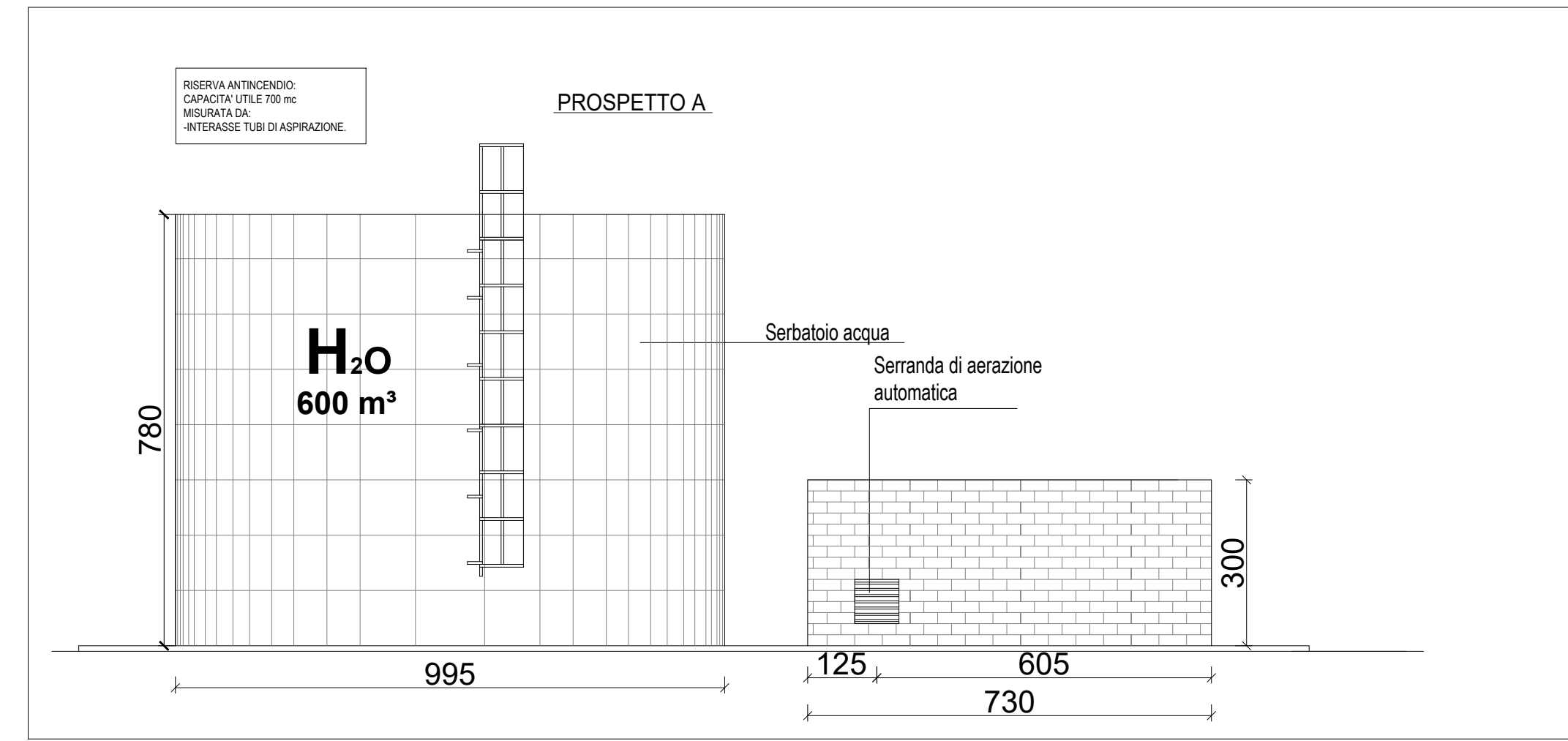
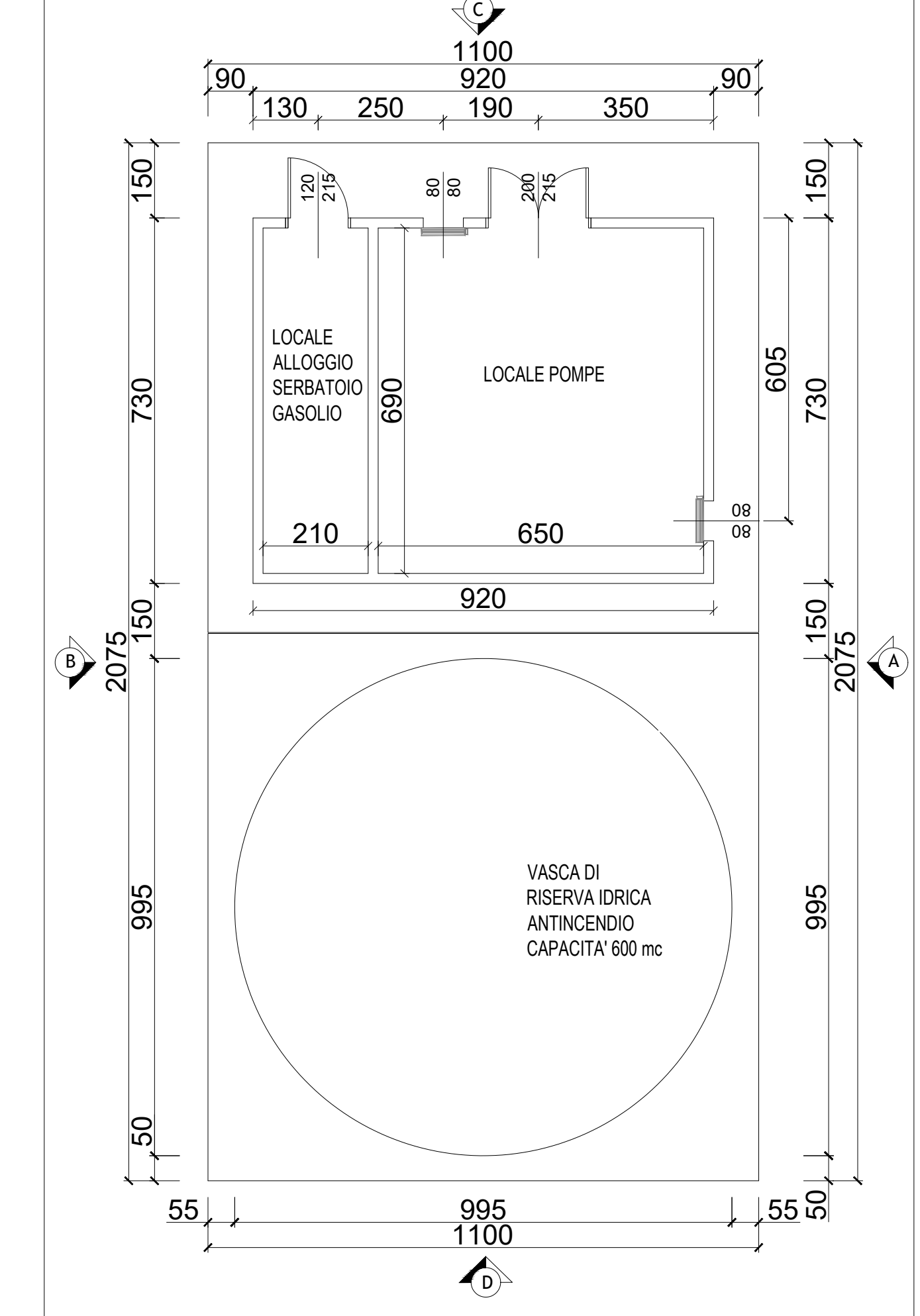
PROSPETTO D



GUARDIANIA SCALA 1:50



LOCALE POMPE SCALA 1:100



COMUNE DI CAMPOGALLIANO (MO)

PROGETTO PER LA REALIZZAZIONE DI NUOVI DEPOSITI E RELATIVI UFFICI

ACCORDO OPERATIVO

FAVOLA
LOCALI TECNICI

Data: 24/07/20
Scala: Varie

COMITENTE
Logistica e Sviluppo s.r.l.
Logistica e Sviluppo s.r.l.
Via Straburgo, 31
41011 Campogalliano (MO)

GENERAL CONTRACTOR
GSE
GSE Italia s.r.l.
Via G. Peruzzi, 37
20124 Milano (MI)

PROGETTISTA E DL
SFRE
ING. FILIPPO SALIS
VIA DELLA MOSCOVA, 47 - 20121 MILANO
ISCRIZIONE ORDINE INGEGNERI MILANO
MI 24687 - I - 2661

CO-PROGETTISTA URBANISTICO
Studio Dott. Ing. Grotti Loris
Studio Dott. Ing. Grotti Loris
41126 San Damiano (MO)

Commessa **14933** Fase **Tav** Lotto _____ Disegno **014** Rev **A**